

NEW HAVEN

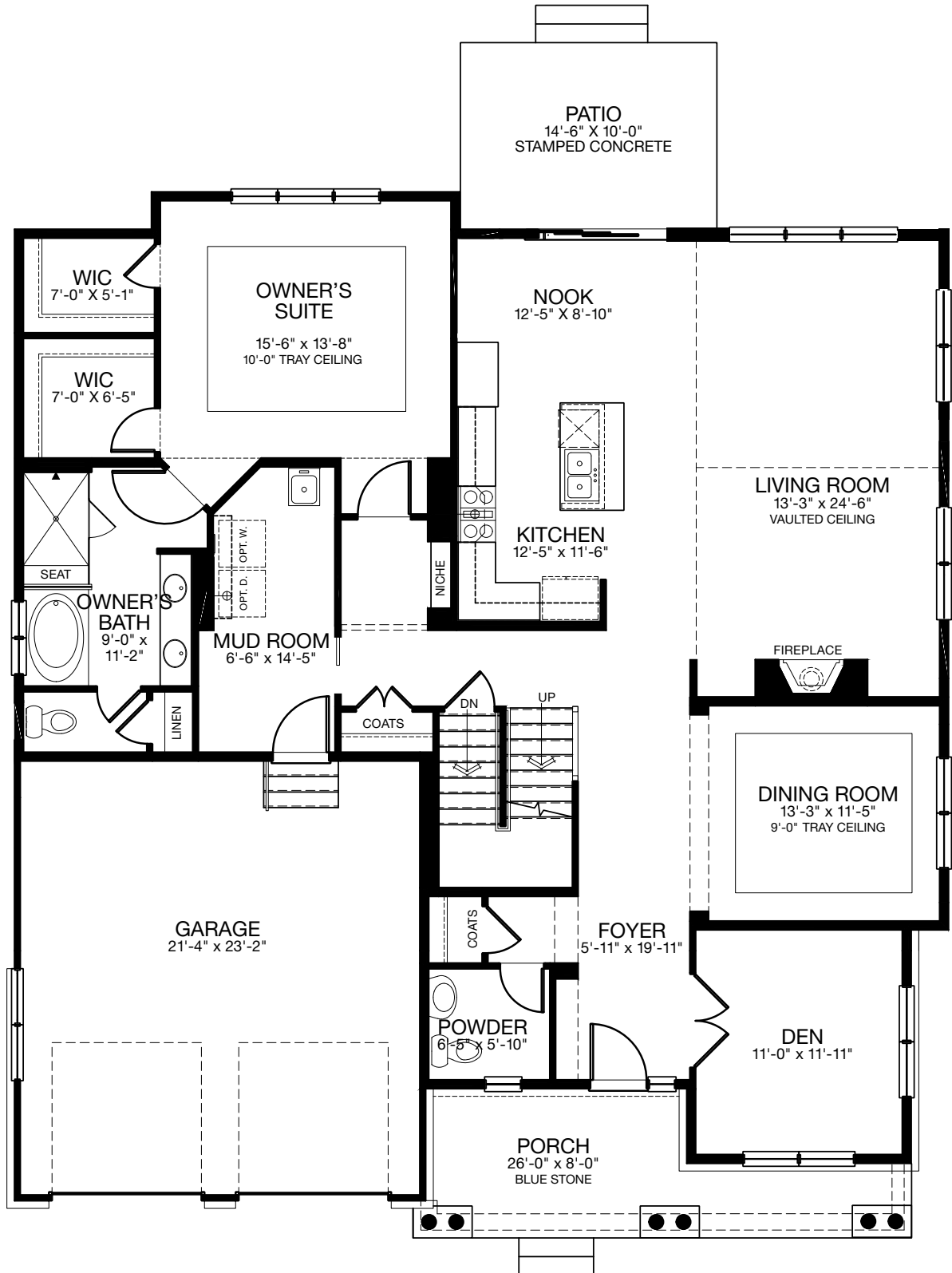


549 Hannah Lane

110-000

NEW HAVEN SHINGLE - MAIN FLOOR

3006 SQ. FT. | MAIN: 1983 | UPPER: 1023 | BASEMENT: 1836 | GARAGE: 513



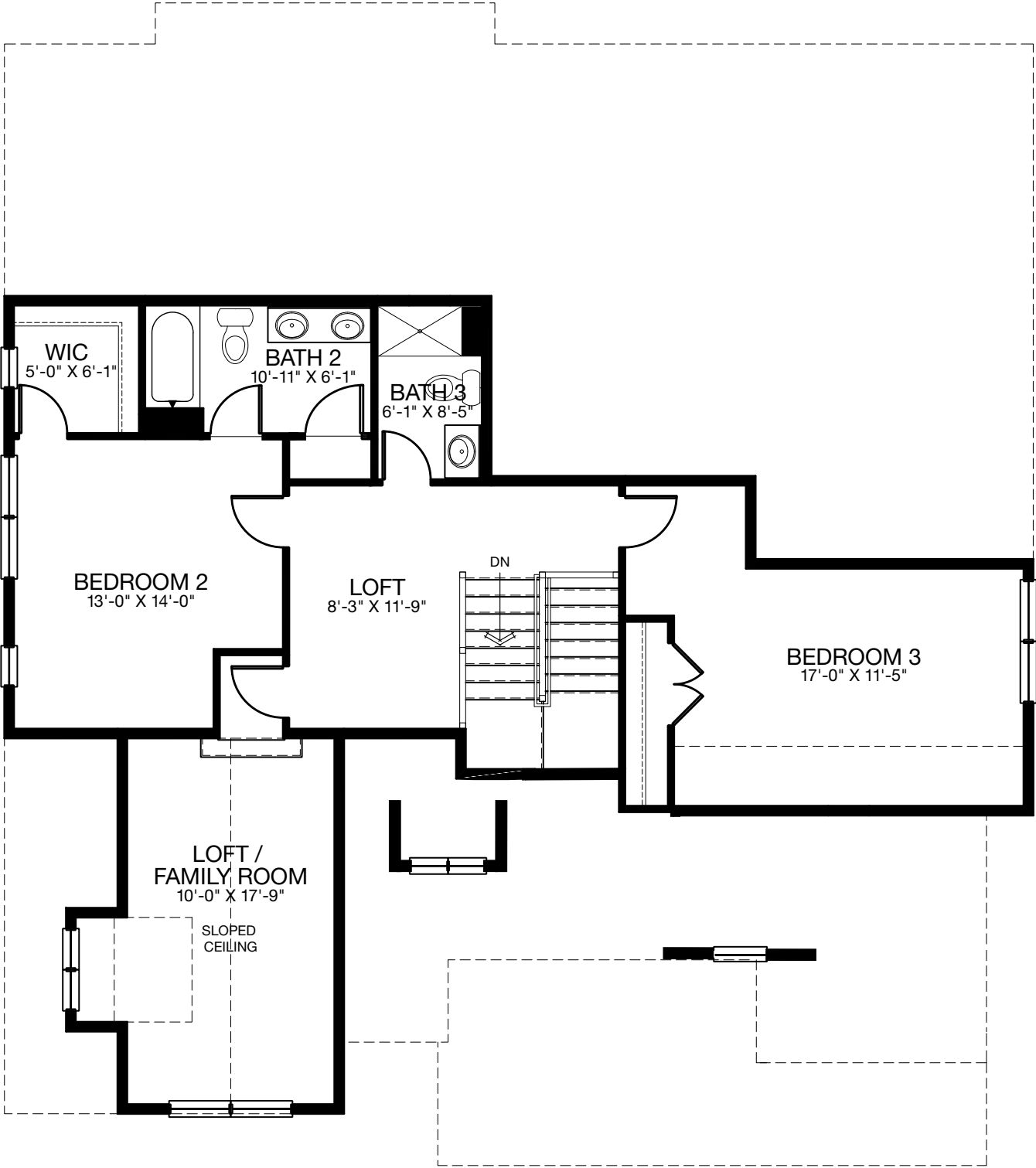
MAIN FLOOR NANTUCKET



Plans, materials, prices and specifications are based on availability and are subject to change without notice. Architectural, structural and other revisions may be made as are deemed necessary by the developer, builder, architect or as may be required by law. Images are used for illustrative purposes only and may reflect available upgrades over standard specifications. NOTE: Window placement is determined by elevation style.

NEW HAVEN SHINGLE - UPPER FLOOR

3006 SQ. FT. | MAIN: 1983 | UPPER: 1023 | BASEMENT: 1836 | GARAGE: 513



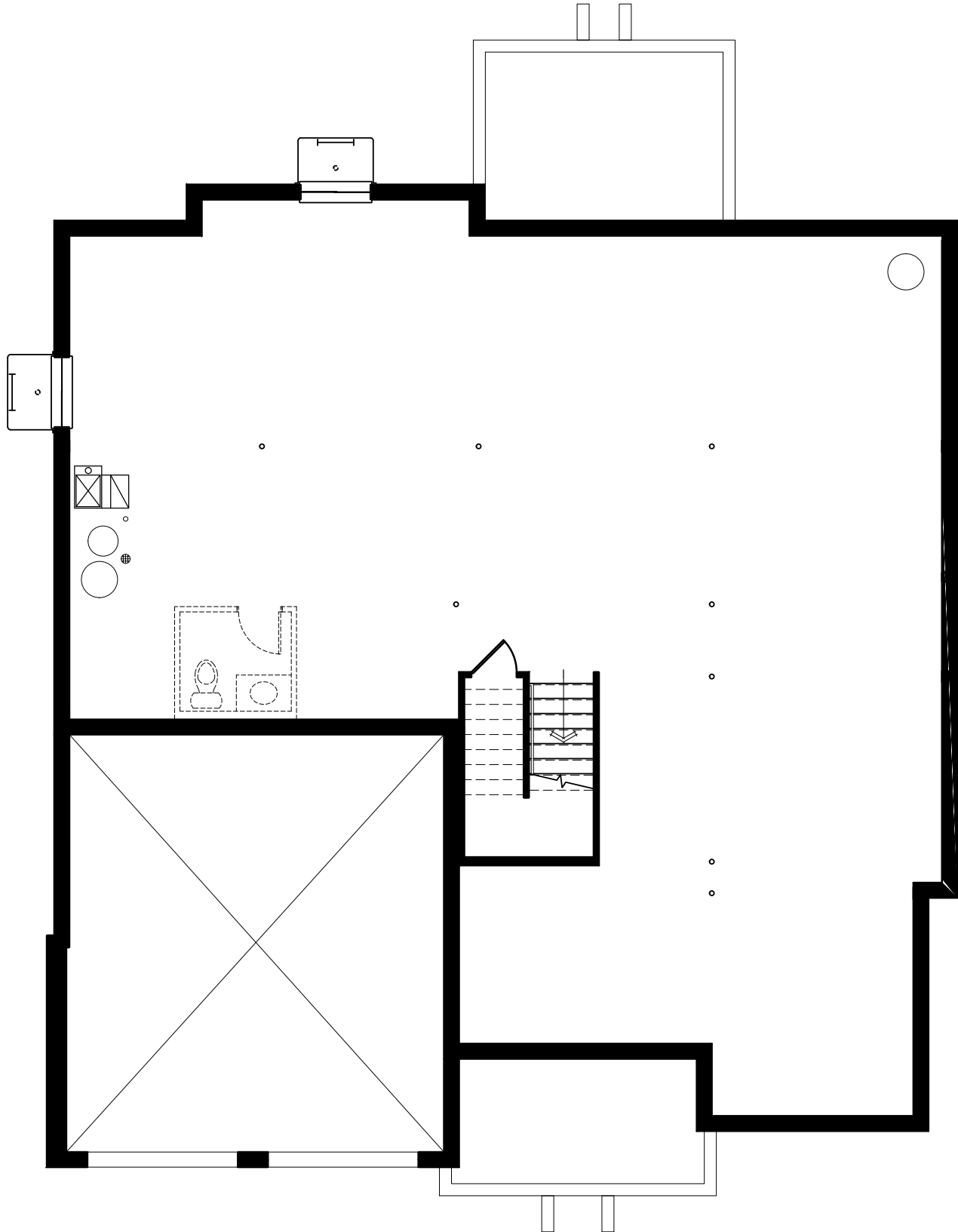
UPPER FLOOR



Plans, materials, prices and specifications are based on availability and are subject to change without notice. Architectural, structural and other revisions may be made as are deemed necessary by the developer, builder, architect or as may be required by law. Images are used for illustrative purposes only and may reflect available upgrades over standard specifications. NOTE: Window placement is determined by elevation style.

NEW HAVEN SHINGLE - BASEMENT

3006 SQ. FT. | MAIN: 1983 | UPPER: 1023 | BASEMENT: 1836 | GARAGE: 513



Plans, materials, prices and specifications are based on availability and are subject to change without notice. Architectural, structural and other revisions may be made as are deemed necessary by the developer, builder, architect or as may be required by law. Images are used for illustrative purposes only and may reflect available upgrades over standard specifications. NOTE: Window placement is determined by elevation style.

EDWARD R. JAMES COMPANIES

Development is more than bricks and mortar. It is the privilege and responsibility of changing the landscape for generations to come. Development is more than building on the land. It is about building to the land, with thoughtful planning, contextual architecture and integrative landscaping that together respect and enhance the environment, and provide lasting value. It is an iterative process in search of an optimal solution, involving people, expectations and commitments. Development requires respect for the people we serve, the communities we build in, and the employees and professionals we work with. Throughout the process, development requires a commitment to excellence, so that we may fulfill our mission: **TO EMBRACE THE QUALITY OF LIFE FOR OUR RESIDENTS AND THE COMMUNITIES IN WHICH WE BUILD.**

NEW HAVEN



COTTAGE