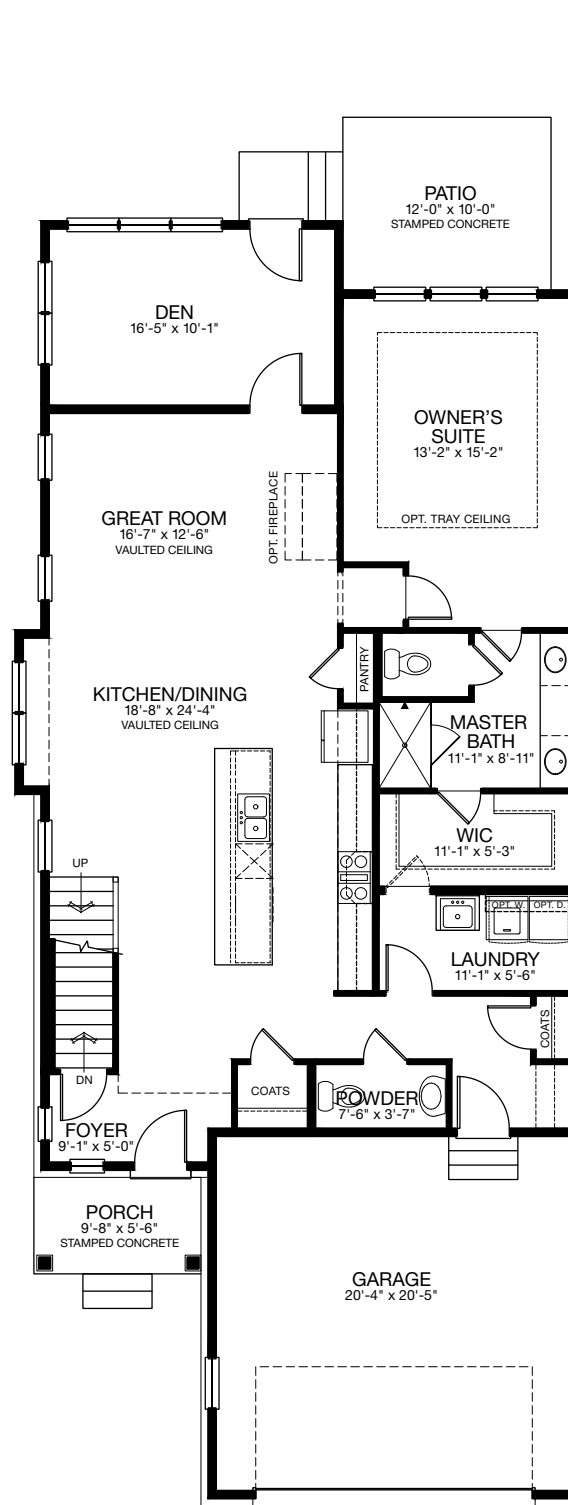


# BECKET



# BECKET - MAIN FLOOR

2700 SQ. FT. | MAIN: 1622 | UPPER: 1078 | BASEMENT: 1515 | GARAGE: 446



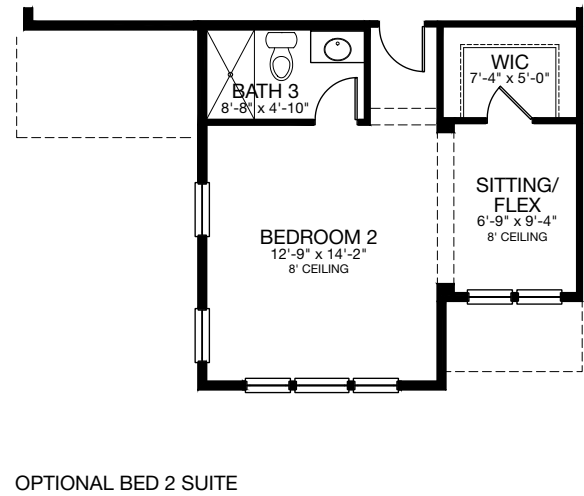
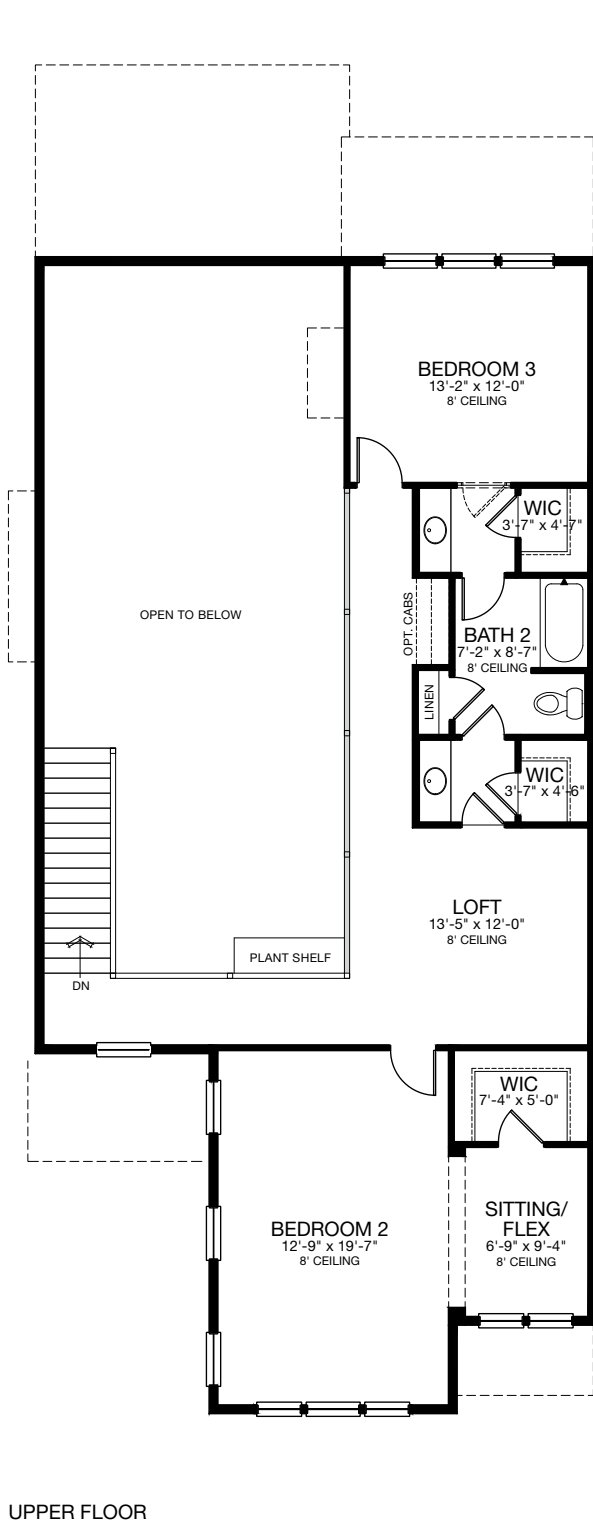
MAIN FLOOR



Plans, materials, prices and specifications are based on availability and are subject to change without notice. Architectural, structural and other revisions may be made as are deemed necessary by the developer, builder, architect or as may be required by law. Images are used for illustrative purposes only and may reflect available upgrades over standard specifications. NOTE: Window placement is determined by elevation style.

# BECKET - UPPER FLOOR

2700 SQ. FT. | MAIN: 1622 | UPPER: 1078 | BASEMENT: 1515 | GARAGE: 446



OPTIONAL BED 2 SUITE

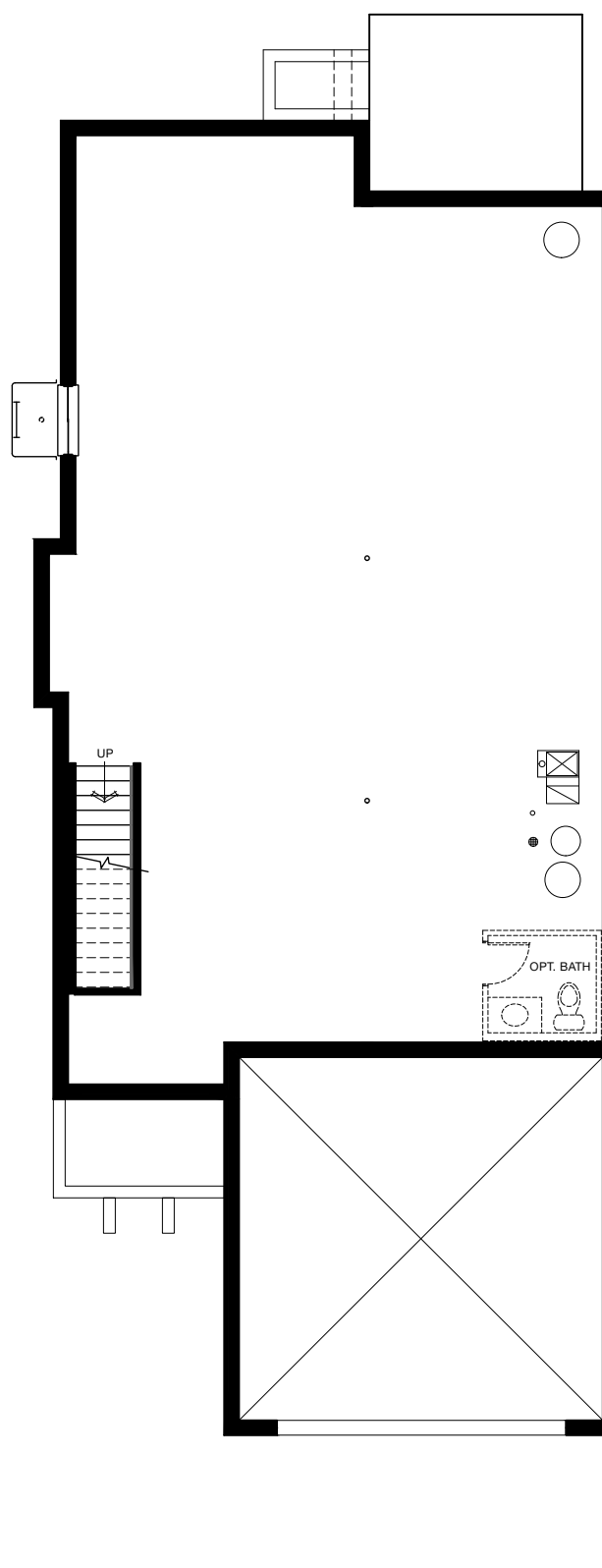
UPPER FLOOR



Plans, materials, prices and specifications are based on availability and are subject to change without notice. Architectural, structural and other revisions may be made as are deemed necessary by the developer, builder, architect or as may be required by law. Images are used for illustrative purposes only and may reflect available upgrades over standard specifications. NOTE: Window placement is determined by elevation style.

# BECKET - BASEMENT

2700 SQ. FT. | MAIN: 1622 | UPPER: 1078 | BASEMENT: 1515 | GARAGE: 446



BASEMENT



Plans, materials, prices and specifications are based on availability and are subject to change without notice. Architectural, structural and other revisions may be made as are deemed necessary by the developer, builder, architect or as may be required by law. Images are used for illustrative purposes only and may reflect available upgrades over standard specifications. NOTE: Window placement is determined by elevation style.

# EDWARD R. JAMES COMPANIES

Hinsdale Meadows a beautiful low maintenance lifestyle community from an award winning developer, Edward R. James Companies. Offering 21 Single Family Cluster Homes and 42 Duplex Villas with first floor masters, superior selections, well-appointed bath, luxurious kitchens and much more. Close to downtown Hinsdale shopping, metra train, access to the highway and private entrance to Katherine Legge Park.



# BECKET

