



# Woodbridge *Cottage*



EDWARD R. JAMES COMPANIES  
EXCEPTIONAL HOMES . . . EXCEPTIONAL PLACES

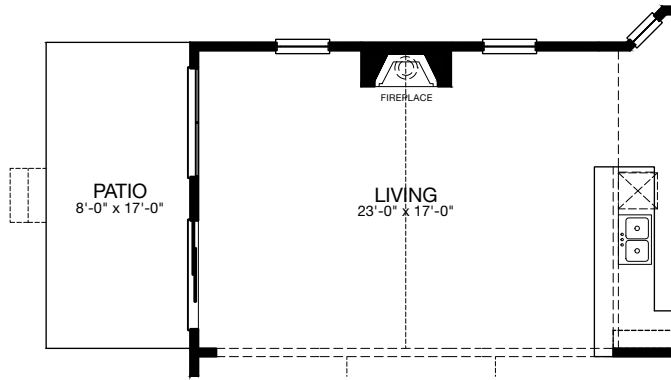
# Woodbridge Cottage Main Floor



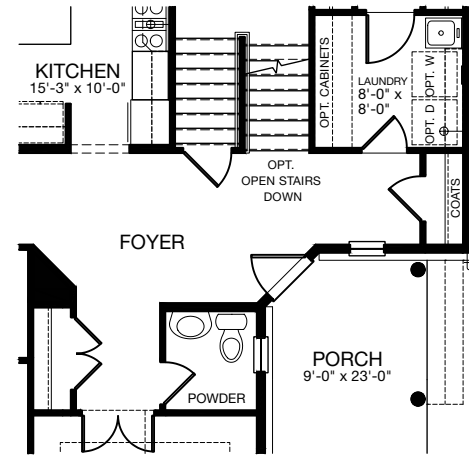
Plan, materials, prices and specifications are based on availability and subject to change without notice. Architectural, structural and other revisions may be made as are deemed necessary by the developer, builder, architect or as may be required by law. Images used for illustrative purposes only. ALL DIMENSIONS ARE APPROXIMATE. NOTE: Window placement determined by elevation style. Floor plans depict standard elevation only. Window well locations subject to change.

	SQ. FT
<b>Main Floor</b>	<b>2226</b>
Upper Floor	1352
Total	3578
Basement	2080
Garage	472

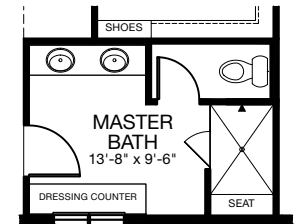
# Woodbridge Cottage Main Floor Options



MAIN FLOOR  
OPT. EXTENDED LIVING ROOM + 102 S.F.

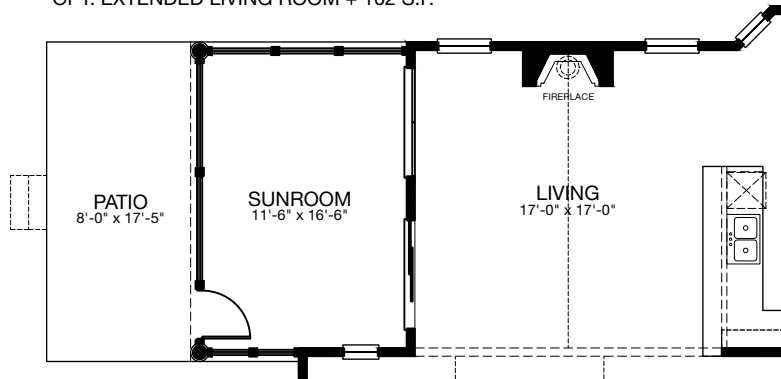


MAIN FLOOR  
OPT. CLOSET PLAN

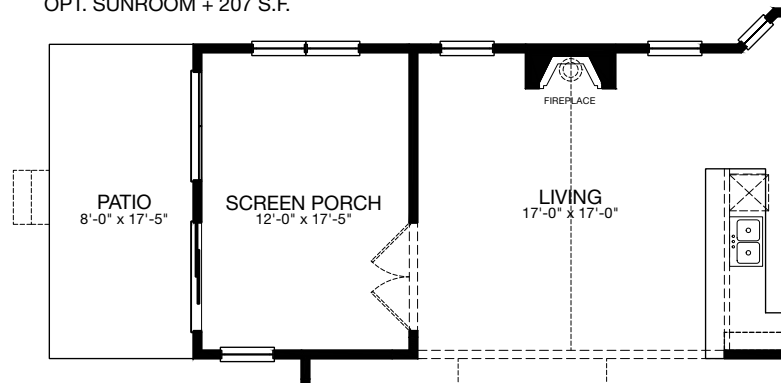


MAIN FLOOR  
OPT. MAIN FLOOR BATH 3

MAIN FLOOR  
OPT. LUXURY MASTER BATH



MAIN FLOOR  
OPT. SUNROOM + 207 S.F.



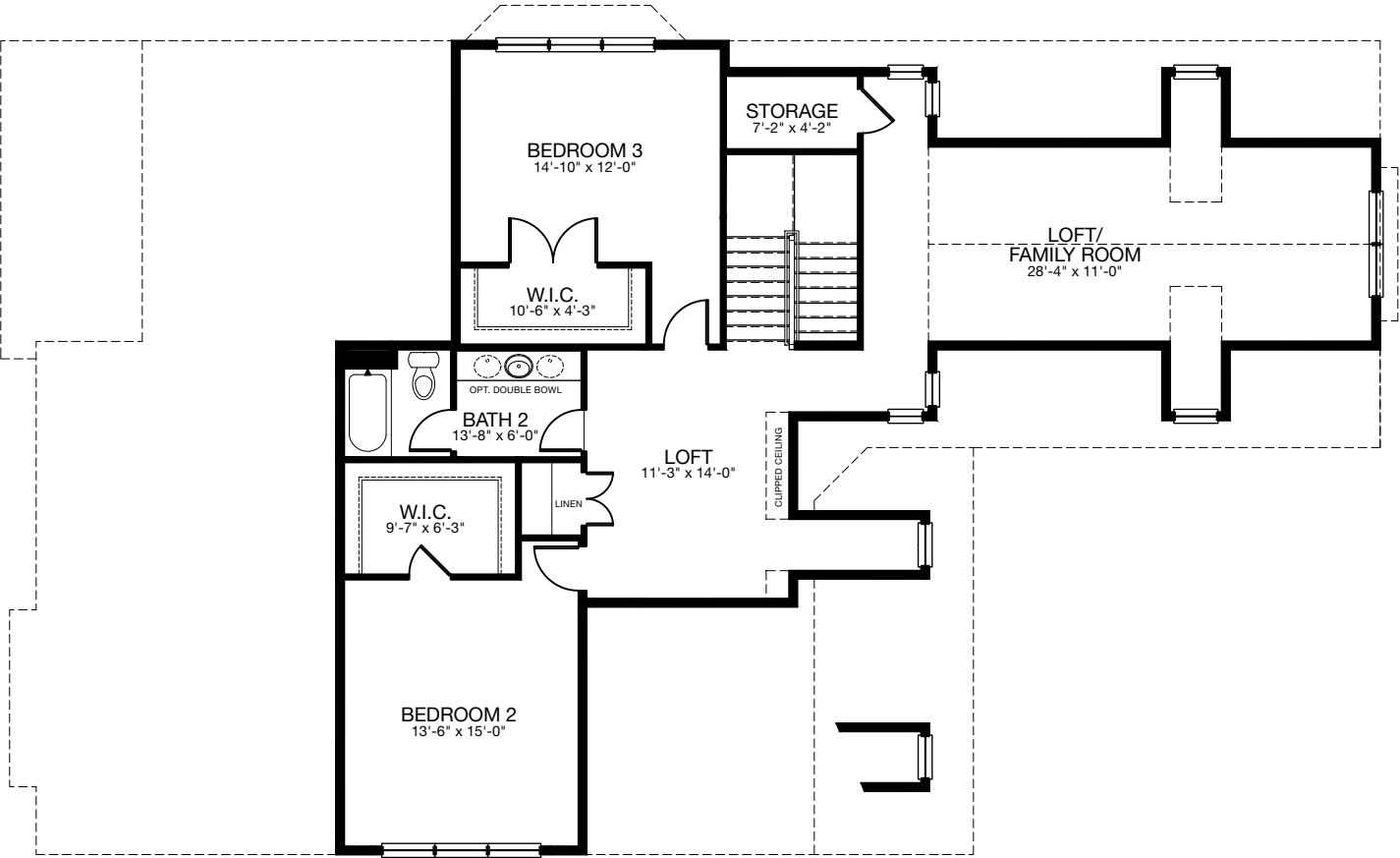
MAIN FLOOR  
OPT. SCREEN PORCH + 207 S.F.



Plan, materials, prices and specifications are based on availability and subject to change without notice. Architectural, structural and other revisions may be made as are deemed necessary by the developer, builder, architect or as may be required by law. Images used for illustrative purposes only. ALL DIMENSIONS ARE APPROXIMATE. NOTE: Window placement determined by elevation style. Floor plans depict standard elevation only. Window well locations subject to change.

	SQ. FT
<b>Main Floor</b>	<b>2226</b>
Upper Floor	1352
<b>Total</b>	<b>3578</b>
Basement	2080
Garage	472

# Woodbridge Cottage Upper Floor



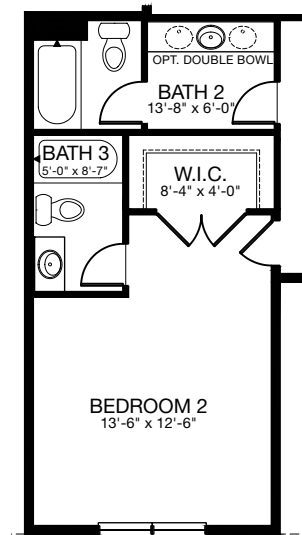
UPPER FLOOR COTTAGE



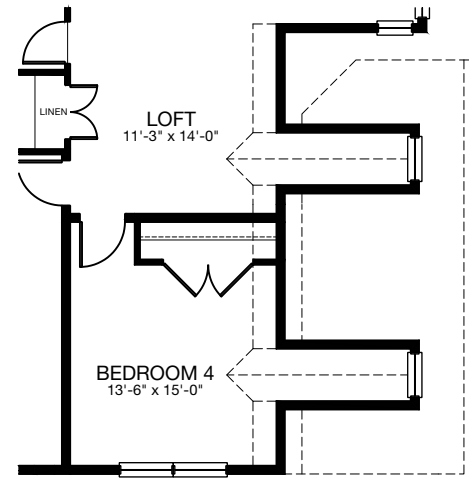
Plan, materials, prices and specifications are based on availability and subject to change without notice. Architectural, structural and other revisions may be made as are deemed necessary by the developer, builder, architect or as may be required by law. Images used for illustrative purposes only. ALL DIMENSIONS ARE APPROXIMATE. NOTE: Window placement determined by elevation style. Floor plans depict standard elevation only. Window well locations subject to change.

	SQ. FT
Main Floor	2226
<b>Upper Floor</b>	<b>1352</b>
Total	3578
Basement	2080
Garage	472

# Woodbridge Cottage Upper Floor Options



UPPER FLOOR  
OPT. UPPER FLOOR BATH 3



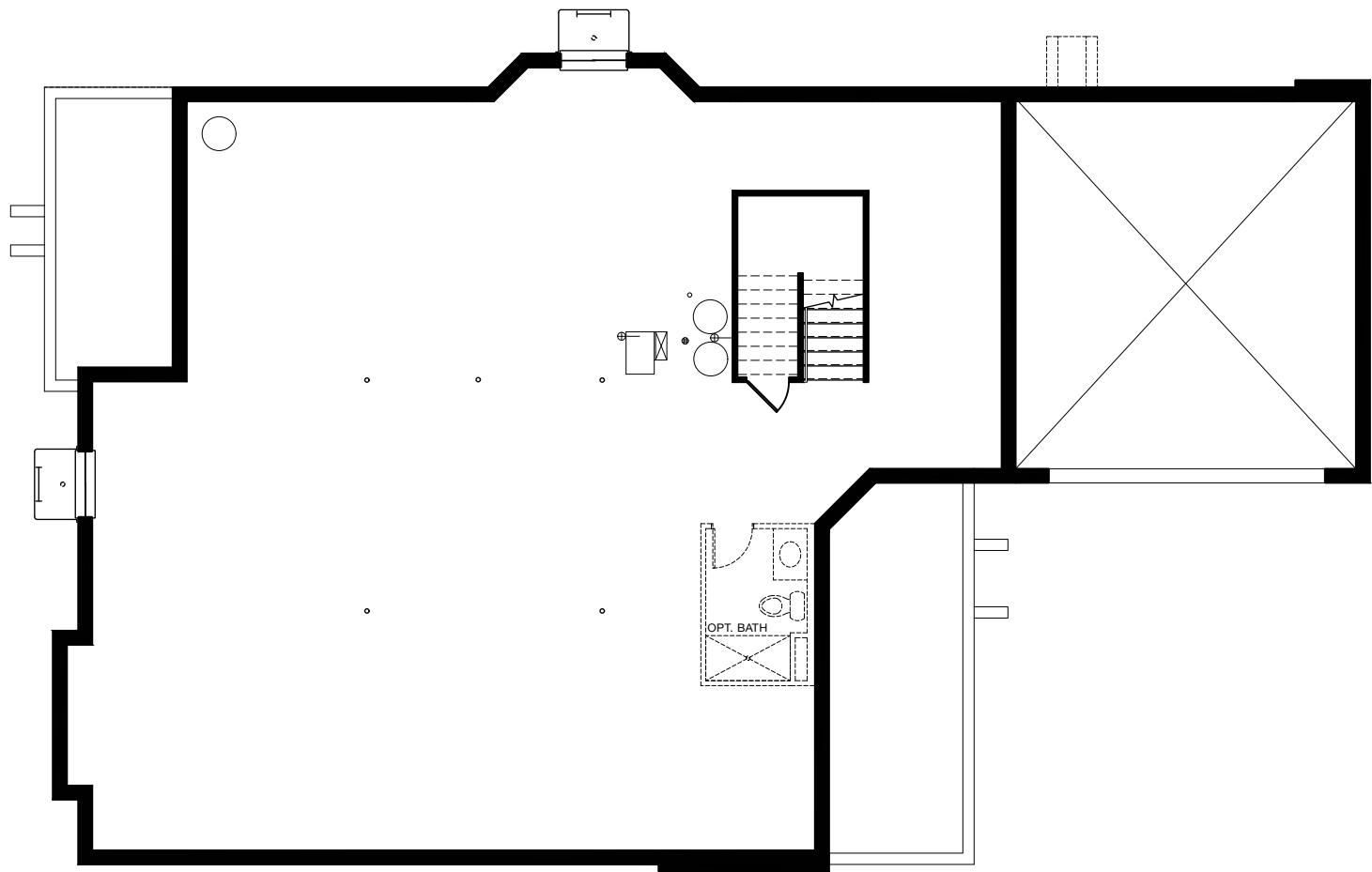
UPPER FLOOR  
OPT. BEDROOM 4 + 194 S.F.



Plan, materials, prices and specifications are based on availability and subject to change without notice. Architectural, structural and other revisions may be made as are deemed necessary by the developer, builder, architect or as may be required by law. Images used for illustrative purposes only. ALL DIMENSIONS ARE APPROXIMATE. NOTE: Window placement determined by elevation style. Floor plans depict standard elevation only. Window well locations subject to change.

	SQ. FT
Main Floor	2226
<b>Upper Floor</b>	<b>1352</b>
Total	3578
Basement	2080
Garage	472

# Woodbridge Cottage Basement



BASEMENT

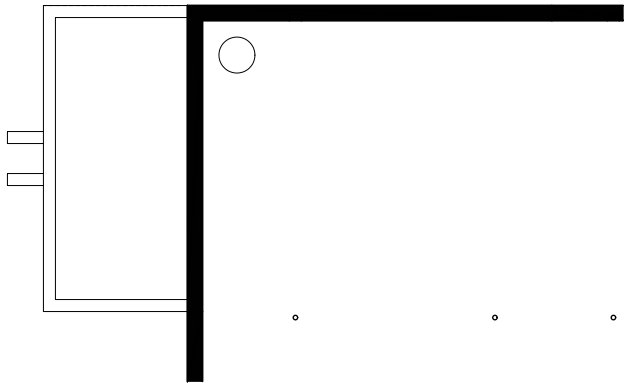


Plan, materials, prices and specifications are based on availability and subject to change without notice. Architectural, structural and other revisions may be made as are deemed necessary by the developer, builder, architect or as may be required by law. Images used for illustrative purposes only. ALL DIMENSIONS ARE APPROXIMATE. NOTE: Window placement determined by elevation style. Floor plans depict standard elevation only. Window well locations subject to change.

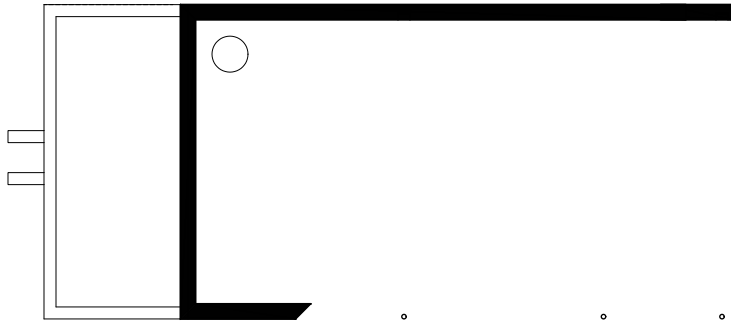
	SQ. FT
Main Floor	2226
Upper Floor	1352
Total	3578
<b>Basement</b>	<b>2080</b>
Garage	472



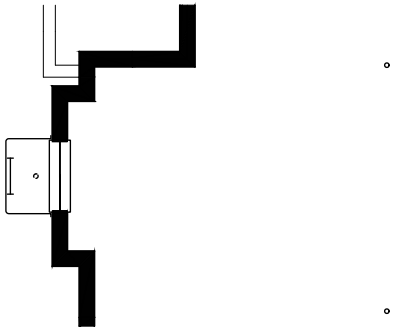
# Woodbridge Cottage Basement Options



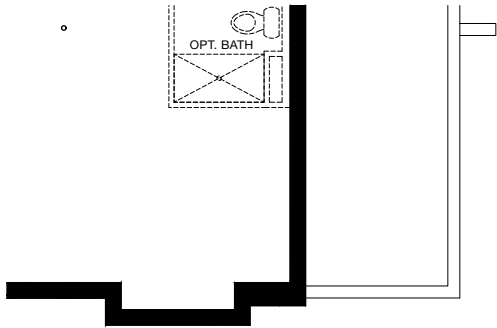
BASEMENT  
OPTIONAL EXTENDED LIVING + 93 SQ. FT



BASEMENT  
OPTIONAL SUNROOM + 194 SQ. FT



BASEMENT  
OPTIONAL DINING ROOM BAY + 12 SQ. FT



BASEMENT  
OPTIONAL DEN BAY + 9 SQ. FT



Plan, materials, prices and specifications are based on availability and subject to change without notice. Architectural, structural and other revisions may be made as are deemed necessary by the developer, builder, architect or as may be required by law. Images used for illustrative purposes only. ALL DIMENSIONS ARE APPROXIMATE. NOTE: Window placement determined by elevation style. Floor plans depict standard elevation only. Window well locations subject to change.

	SQ. FT
Main Floor	2226
Upper Floor	1352
Total	3578
<b>Basement</b>	<b>2080</b>
Garage	472

ANETS WOODS

# Woodbridge Cottage



Woodbridge Cottage with Stone

1230 Voltz Road, Northbrook, IL 60062 | 847.955.1213 | [www.anetswoods.com](http://www.anetswoods.com)