

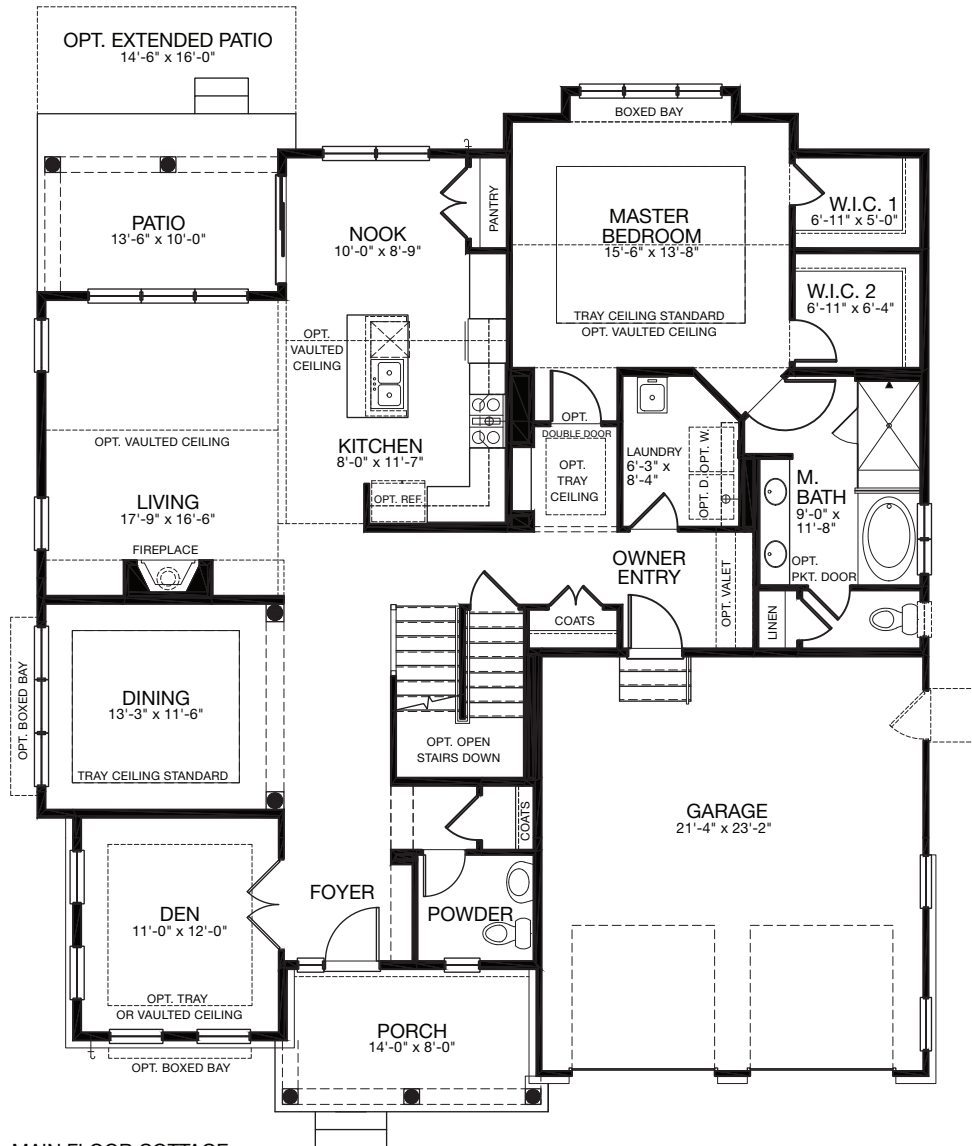


New Haven *Cottage*

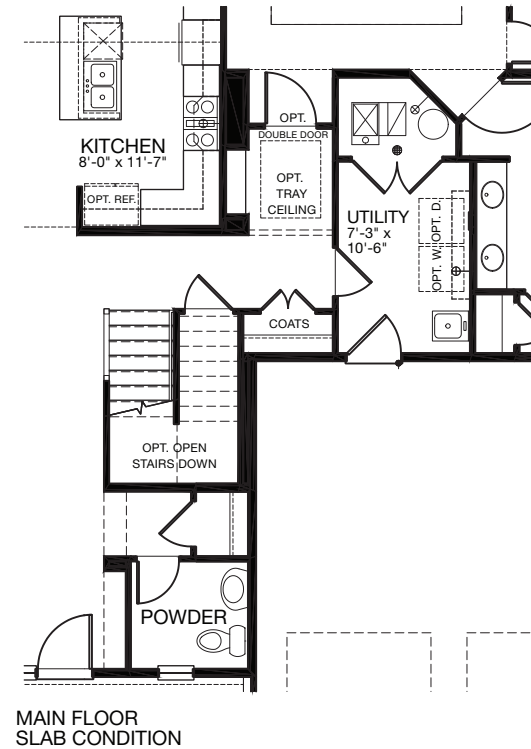


EDWARD R. JAMES COMPANIES
EXCEPTIONAL HOMES... EXCEPTIONAL PLACES

New Haven Cottage Main Floor



MAIN FLOOR COTTAGE
BASEMENT CONDITION



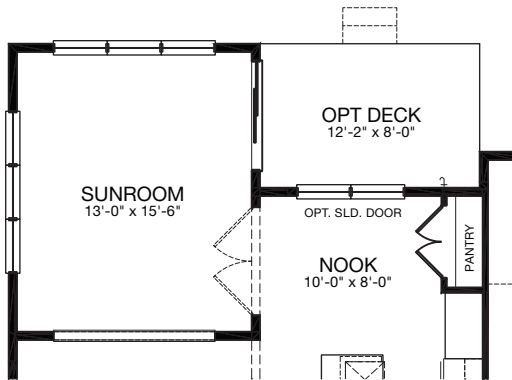
MAIN FLOOR
SLAB CONDITION



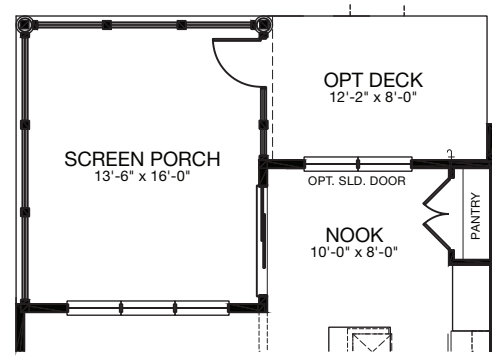
Plan, materials, prices and specifications are based on availability and subject to change without notice. Architectural, structural and other revisions may be made as are deemed necessary by the developer, builder, architect or as may be required by law. Images used for illustrative purposes only. ALL DIMENSIONS ARE APPROXIMATE. NOTE: Window placement determined by elevation style. Floor plans depict standard elevation only. Window well locations subject to change.

	SQ. FT
Main Floor	1890
Upper Floor	1023
Total	2913
Basement	1740
Garage	513

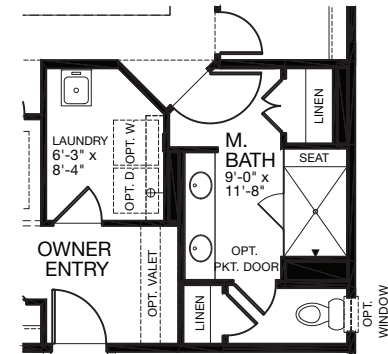
New Haven Cottage Main Floor Options



MAIN FLOOR
OPTIONAL SUNROOM + 220 SF



MAIN FLOOR
OPTIONAL SCREEN PORCH + 220 SF



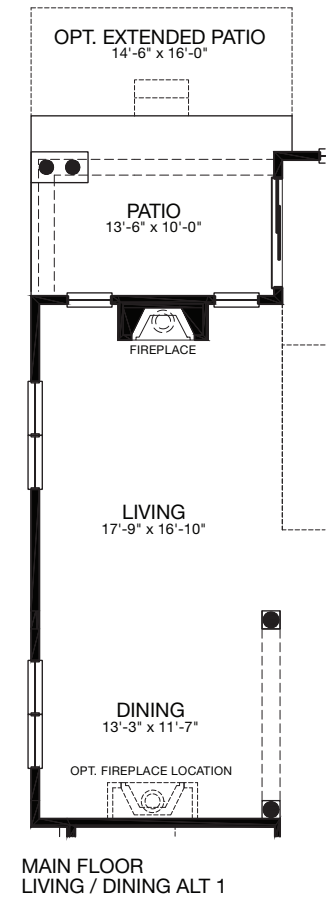
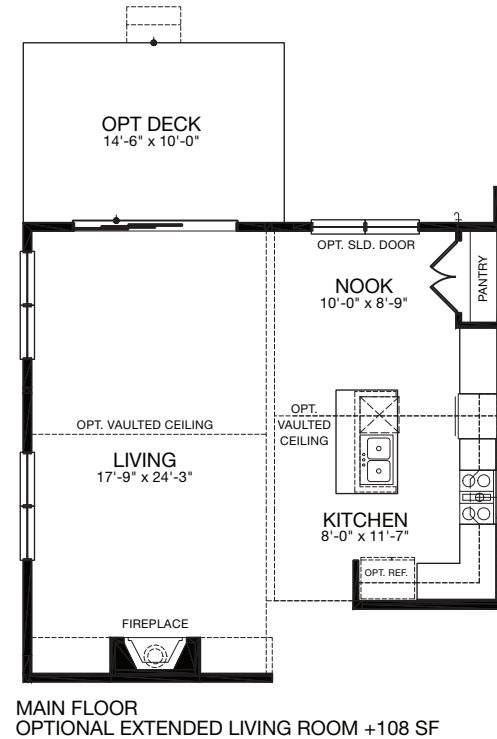
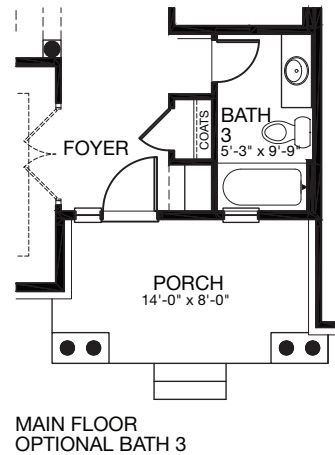
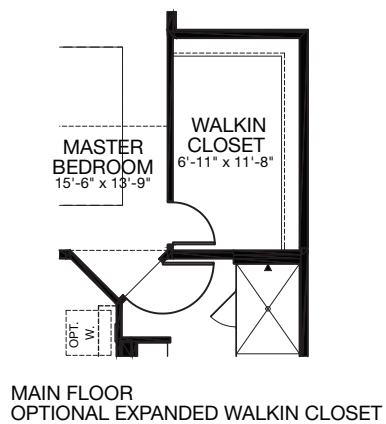
MAIN FLOOR
OPTIONAL LUXURY MASTER BATH



Plan, materials, prices and specifications are based on availability and subject to change without notice. Architectural, structural and other revisions may be made as are deemed necessary by the developer, builder, architect or as may be required by law. Images used for illustrative purposes only. ALL DIMENSIONS ARE APPROXIMATE. NOTE: Window placement determined by elevation style. Floor plans depict standard elevation only. Window well locations subject to change.

	SQ. FT
Main Floor	1890
Upper Floor	1023
Total	2913
Basement	1740
Garage	513

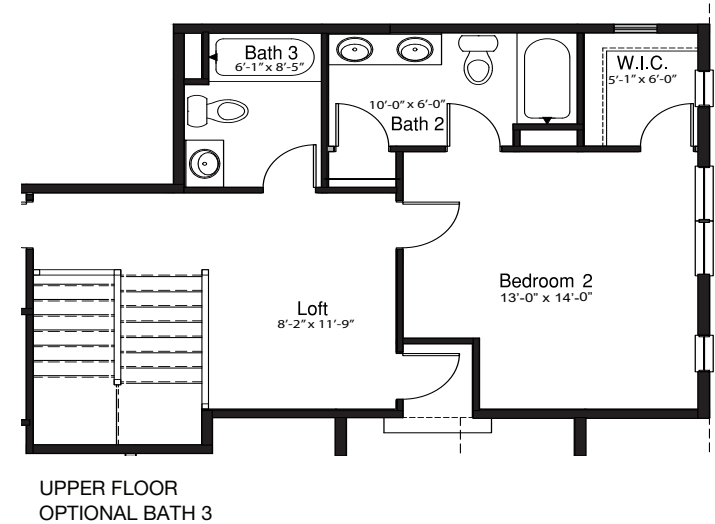
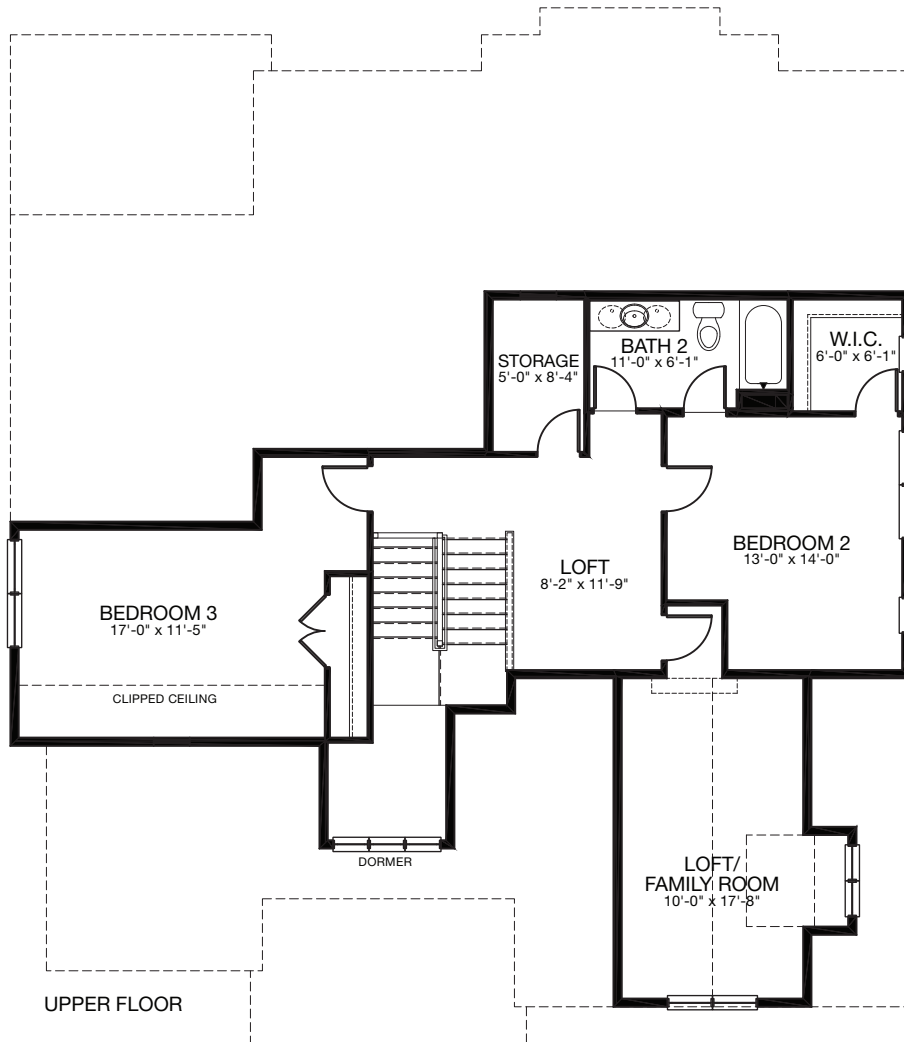
New Haven Cottage Main Floor Options



Plan, materials, prices and specifications are based on availability and subject to change without notice. Architectural, structural and other revisions may be made as are deemed necessary by the developer, builder, architect or as may be required by law. Images used for illustrative purposes only. ALL DIMENSIONS ARE APPROXIMATE. NOTE: Window placement determined by elevation style. Floor plans depict standard elevation only. Window well locations subject to change.

	SQ. FT
Main Floor	1890
Upper Floor	1023
Total	2913
Basement	1740
Garage	513

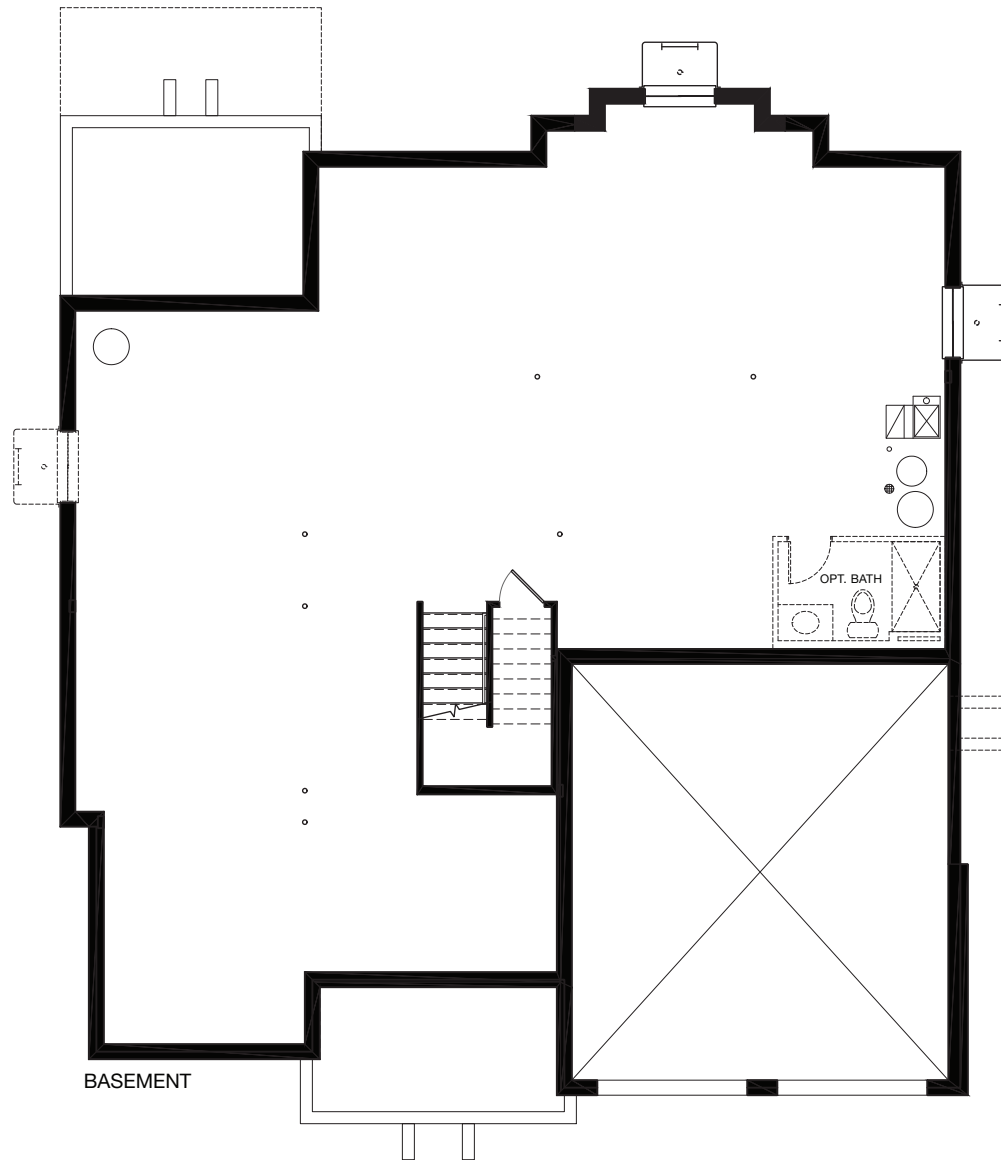
New Haven Cottage Upper Floor & Option



Plan, materials, prices and specifications are based on availability and subject to change without notice. Architectural, structural and other revisions may be made as are deemed necessary by the developer, builder, architect or as may be required by law. Images used for illustrative purposes only. ALL DIMENSIONS ARE APPROXIMATE. NOTE: Window placement determined by elevation style. Floor plans depict standard elevation only. Window well locations subject to change.

	SQ. FT
Main Floor	1890
Upper Floor	1023
Total	2913
Basement	1740
Garage	513

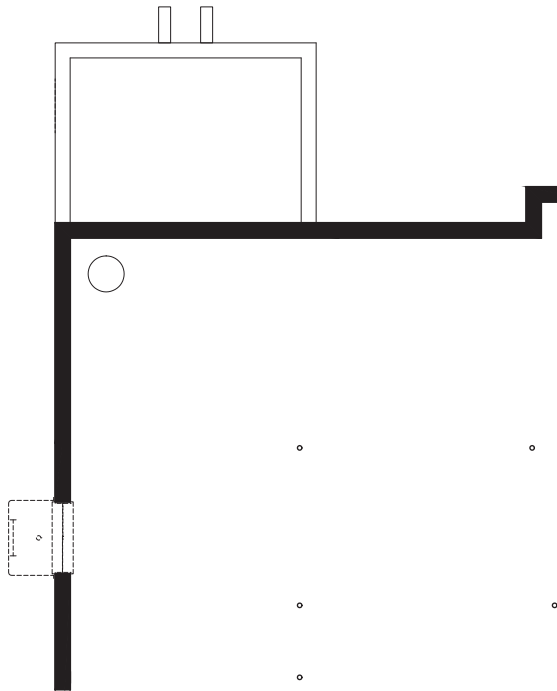
New Haven Cottage Basement



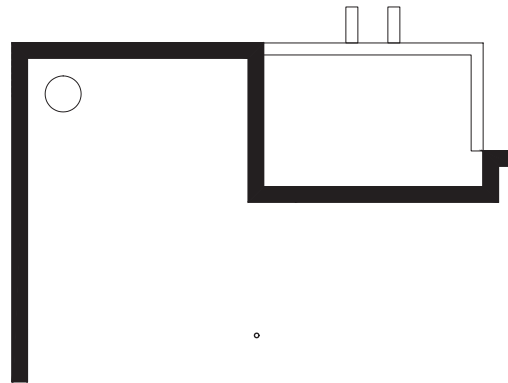
Plan, materials, prices and specifications are based on availability and subject to change without notice. Architectural, structural and other revisions may be made as are deemed necessary by the developer, builder, architect or as may be required by law. Images used for illustrative purposes only. ALL DIMENSIONS ARE APPROXIMATE. NOTE: Window placement determined by elevation style. Floor plans depict standard elevation only. Window well locations subject to change.

	SQ. FT
Main Floor	1890
Upper Floor	1023
Total	2913
Basement	1740
Garage	513

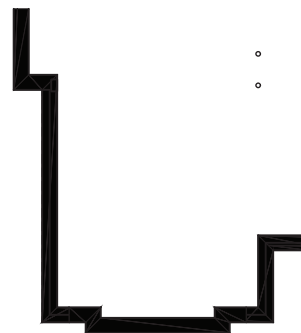
New Haven Cottage Basement Options



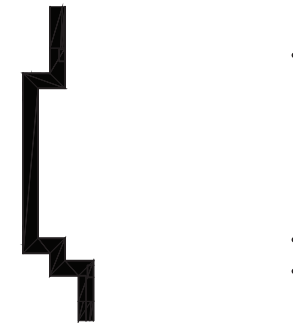
BASEMENT
OPTIONAL EXTENDED LIVING +108 SQ. FT.



BASEMENT
OPTIONAL SUNROOM +206 SQ. FT.



BASEMENT
OPTIONAL DEN BAY +4 SQ. FT.



BASEMENT
OPTIONAL DINING ROOM BAY +12 SQ. FT.



Plan, materials, prices and specifications are based on availability and subject to change without notice. Architectural, structural and other revisions may be made as are deemed necessary by the developer, builder, architect or as may be required by law. Images used for illustrative purposes only. ALL DIMENSIONS ARE APPROXIMATE. NOTE: Window placement determined by elevation style. Floor plans depict standard elevation only. Window well locations subject to change.

	SQ. FT
Main Floor	1890
Upper Floor	1023
Total	2913
Basement	1740
Garage	513

ANETS WOODS

New Haven Cottage



New Haven Cottage with Stone

1230 Voltz Road, Northbrook, IL 60062 | 847.955.1213 | www.anetswoods.com