

*H* INSDALE  
*M* EADOWS

# RIDGEFIELD

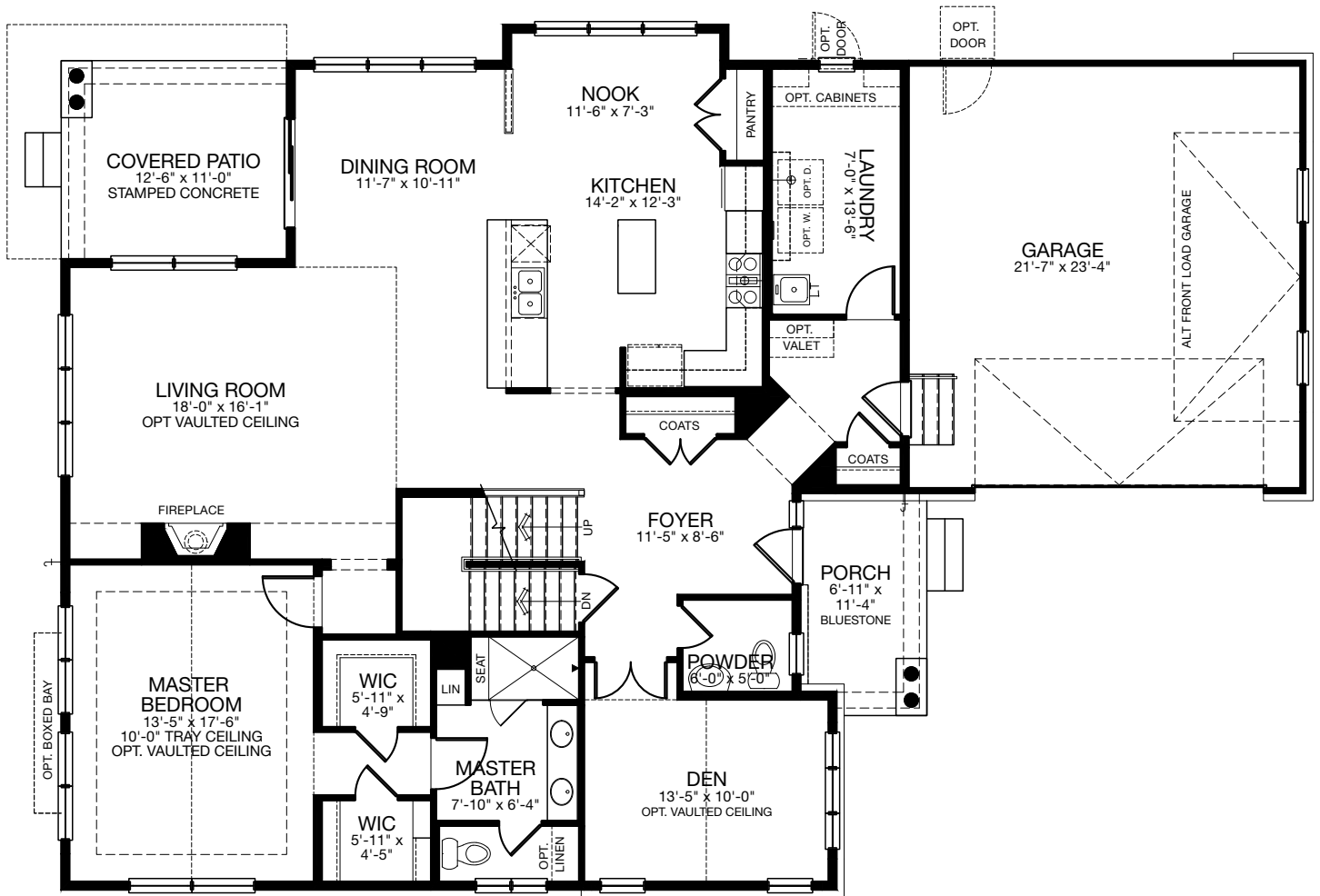


COTTAGE

EDWARD R. JAMES COMPANIES  
EXCEPTIONAL HOMES... EXCEPTIONAL PLACES

# RIDGEFIELD COTTAGE - MAIN FLOOR

3067 SQ. FT. | MAIN: 1940 | UPPER: 1127 | BASEMENT: 1940 | GARAGE: 528



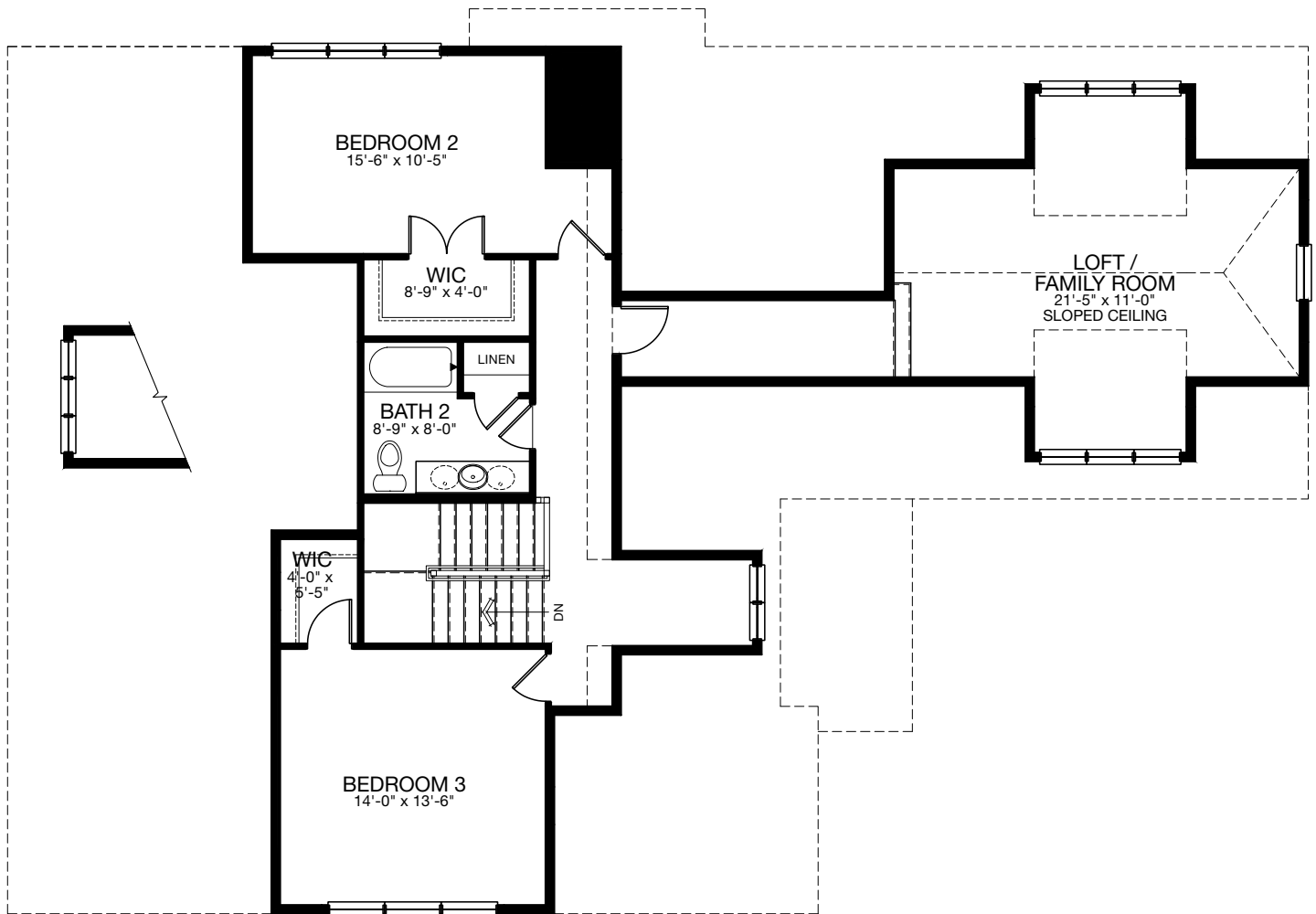
MAIN FLOOR COTTAGE



Plans, materials, prices and specifications are based on availability and are subject to change without notice. Architectural, structural and other revisions may be made as are deemed necessary by the developer, builder, architect or as may be required by law. Images are used for illustrative purposes only and may reflect available upgrades over standard specifications. NOTE: Window placement is determined by elevation style.

# RIDGEFIELD COTTAGE - UPPER FLOOR

3067 SQ. FT. | MAIN: 1940 | UPPER: 1127 | BASEMENT: 1940 | GARAGE: 528



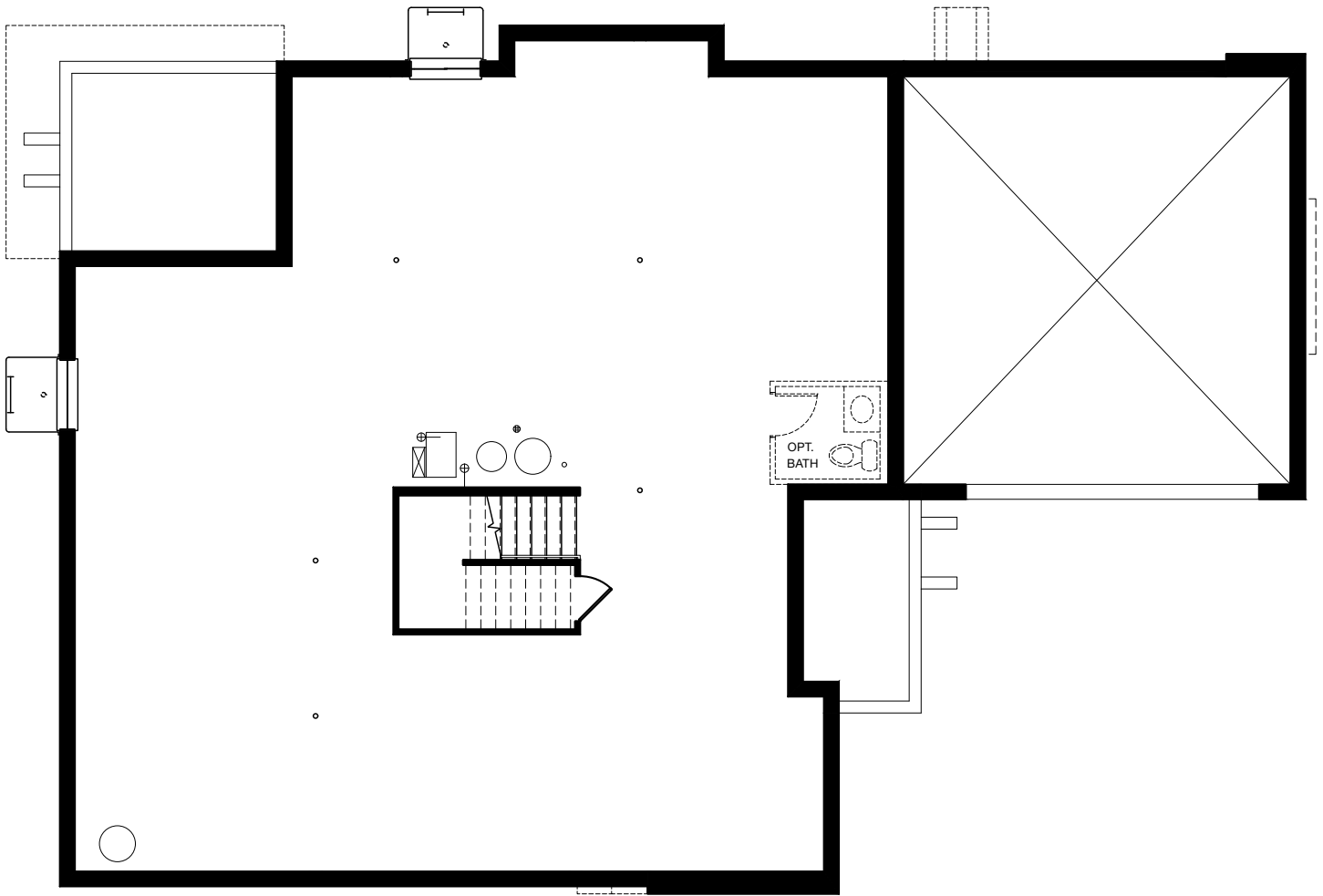
UPPER FLOOR COTTAGE



Plans, materials, prices and specifications are based on availability and are subject to change without notice. Architectural, structural and other revisions may be made as are deemed necessary by the developer, builder, architect or as may be required by law. Images are used for illustrative purposes only and may reflect available upgrades over standard specifications. NOTE: Window placement is determined by elevation style.

# RIDGEFIELD COTTAGE - BASEMENT

3067 SQ. FT. | MAIN: 1940 | UPPER: 1127 | BASEMENT: 1940 | GARAGE: 528



BASEMENT



Plans, materials, prices and specifications are based on availability and are subject to change without notice. Architectural, structural and other revisions may be made as are deemed necessary by the developer, builder, architect or as may be required by law. Images are used for illustrative purposes only and may reflect available upgrades over standard specifications. NOTE: Window placement is determined by elevation style.



# EDWARD R. JAMES COMPANIES

Development is more than bricks and mortar. It is the privilege and responsibility of changing the landscape for generations to come. Development is more than building on the land. It is about building to the land, with thoughtful planning, contextual architecture and integrative landscaping that together respect and enhance the environment, and provide lasting value. It is an iterative process in search of an optimal solution, involving people, expectations and commitments. Development requires respect for the people we serve, the communities we build in, and the employees and professionals we work with. Throughout the process, development requires a commitment to excellence, so that we may fulfill our mission: TO EMBRACE THE QUALITY OF LIFE FOR OUR RESIDENTS AND THE COMMUNITIES IN WHICH WE BUILD.

# RIDGEFIELD

