

# SINGLE FAMILY HOMES | RIDGEFIELD

- 3 Bedrooms plus screened porch
- 2.5 Bath
- 2 Car Garage

SQUARE FOOTAGES	
MAIN FLOOR	1883
UPPER FLOOR	751
<b>TOTAL</b>	<b>2634</b>
BASEMENT	1761
GARAGE	528

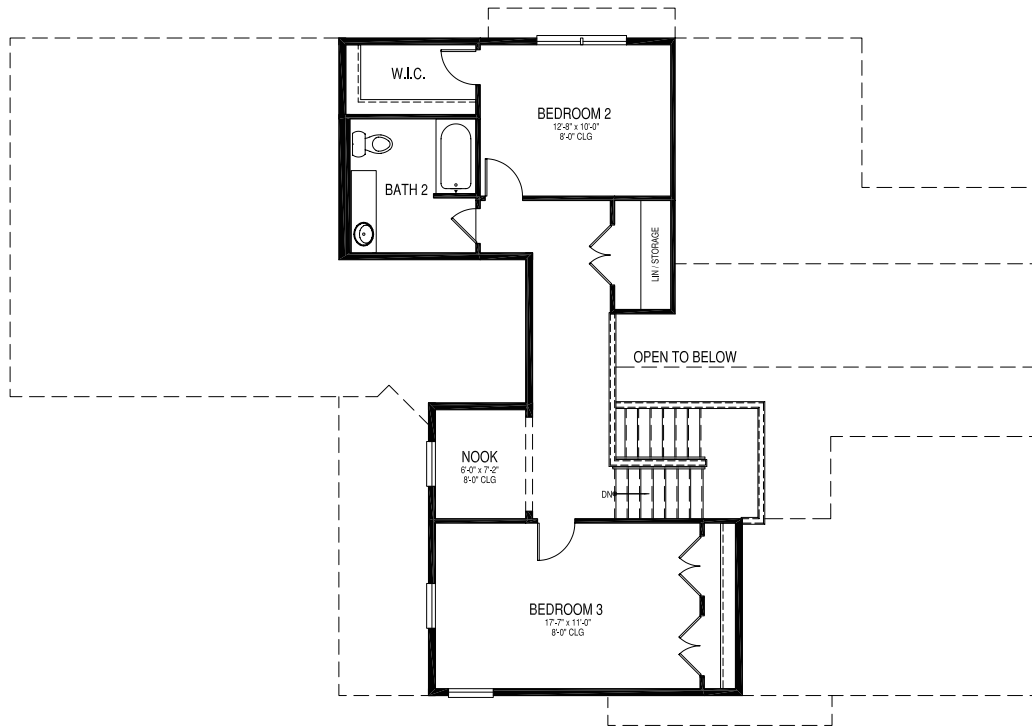


MAIN FLOOR PLAN

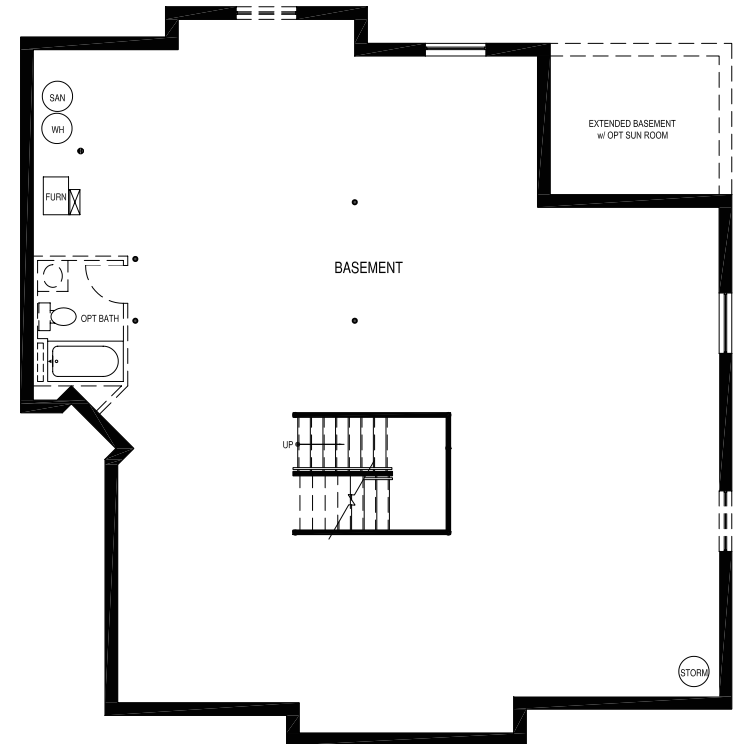


Plan, materials, prices and specifications are based on availability and are subject to change without notice. Architectural, structural and other revisions may be made as are deemed necessary by the developer, builder, architect, or as may be required by law. Images used for illustrative purposes only. NOTE: ALL DIMENSIONS ARE APPROXIMATE

# SINGLE FAMILY HOMES | RIDGEFIELD



UPPER FLOOR PLAN



BASEMENT FLOOR PLAN

